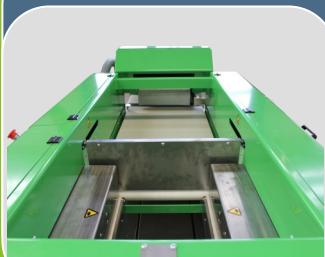


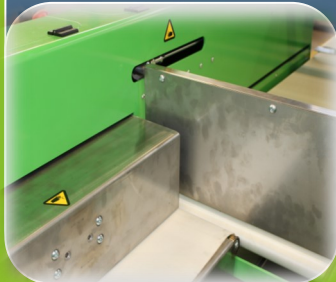
Pattern line up



Infeed



DropZone



Plastic Crates



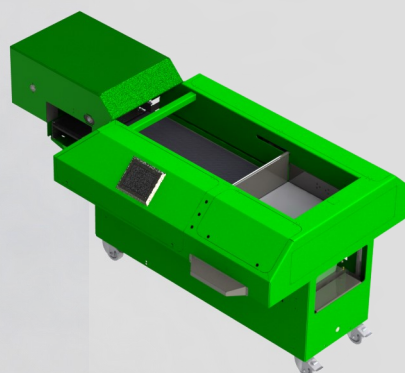
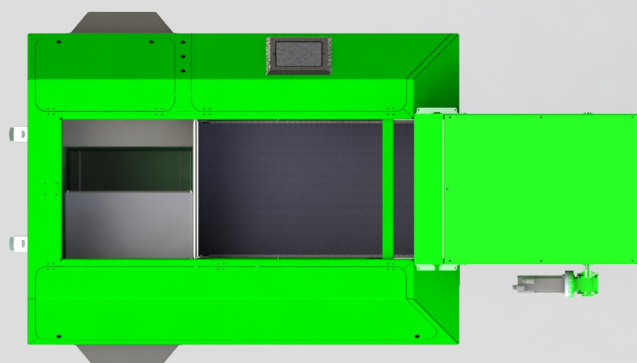
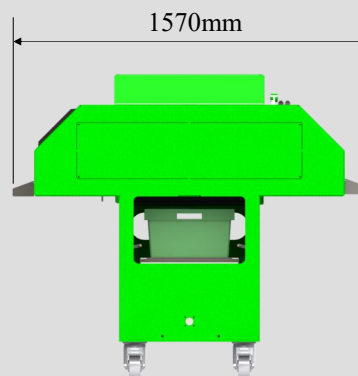
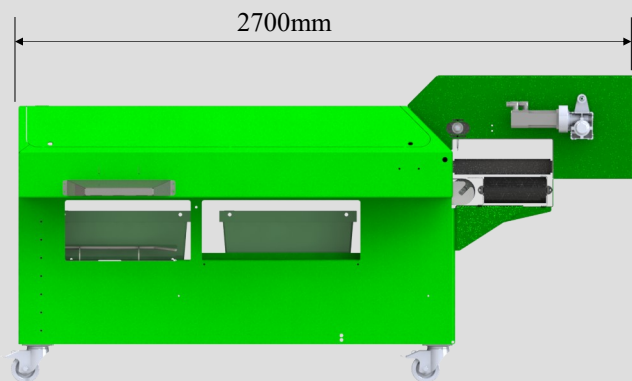
Press to see video



- Multilayer packaging
- Finger touch display
- Minimum space needed Only 7 m2
- Punnets and bags in SAME machine
- New patterns from touch display
- Move easy from packaging line to packaging line
- Vacuum tool as option
- CE15 case erecting and CD15 case destacking
As option

Single- and multilayer case packer. Compact, moveable and easy to use. The casepacker ensures maximum customer satisfaction, because your customers consistently receive well-packed boxes. It packs boxes in a variety of patterns. Improves your work environment and lowers your production costs.

CP50 Pusher



SPECIFICATIONS

Boxes / crates size: W-L-H

- 400 x 600 x 300
- 400 x 300 x 300
- Plastic crates
- Corrugated cardboard
- Massiv cardboard
- Others

Punnets and bags:

- Flow packed
- Tray sealed
- Net packed
- Paper bags
- Wicketed bags
- Vertical form filled bags

DEALER