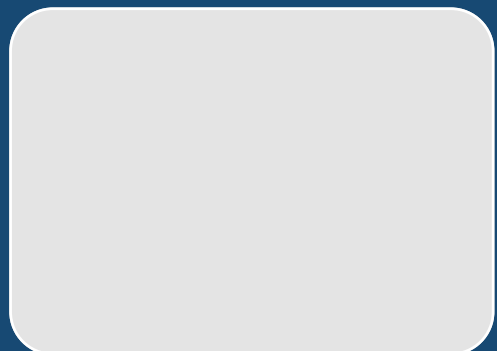


SPECIFICATIONS

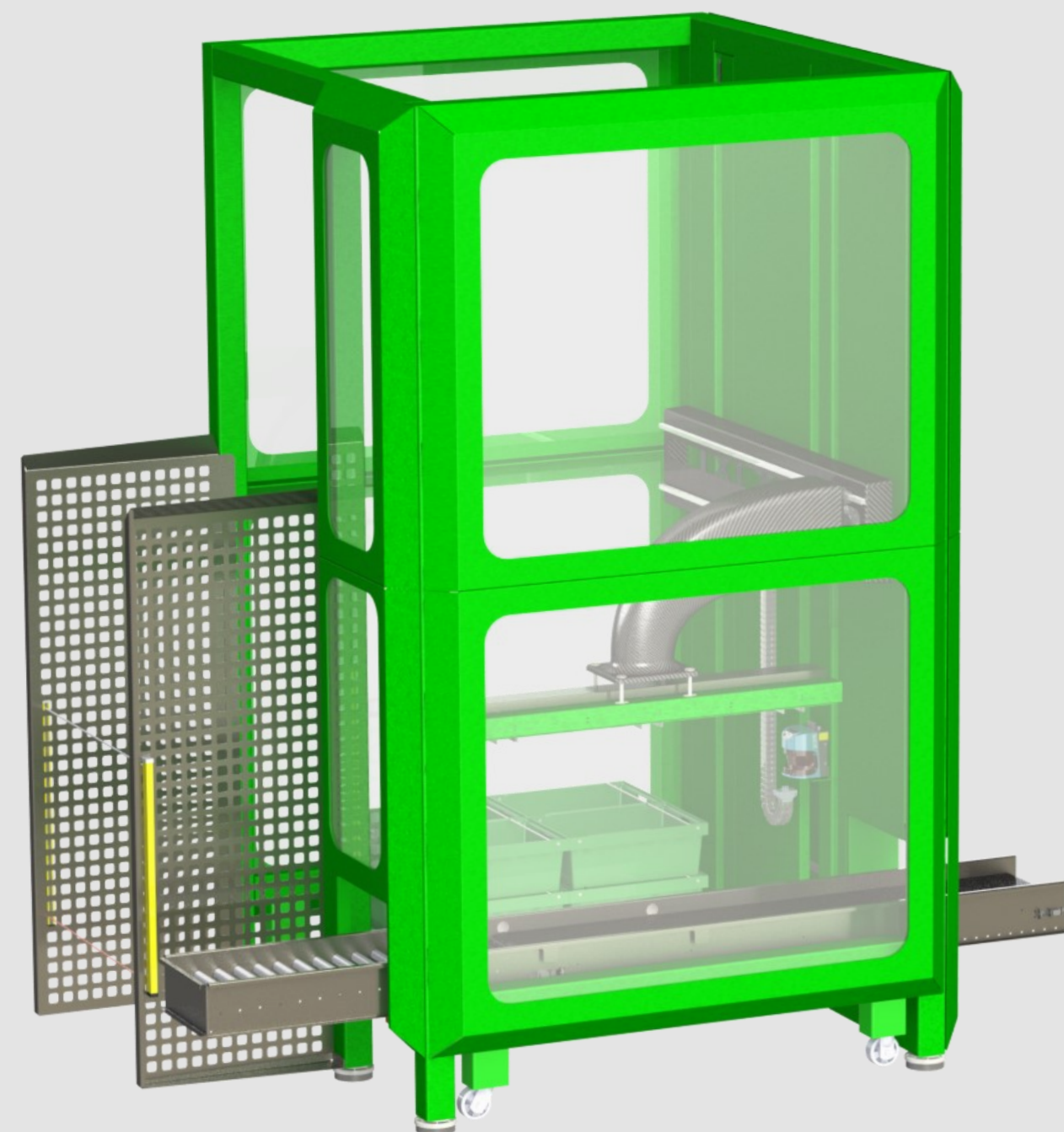
- Box/Crate type : All common types
- Pallet types : All common types
- Power supply : 3 x 400V . 16Amp
- Space Need : Only 8.6 m2
- Speed : 10 Picks pr. min. (20 - 40) crates
- Options : PalletMagazine, Palletconveyor, VacuumTool, Bar closing for swing bar crates

DEALER



PT5

PalleTizer / De- palleTizer



PT5 depalleTizer and paleTizer

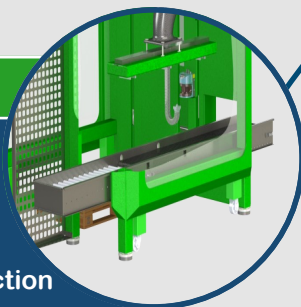
Durable and Light

- Built to last with its stainless steel shield and axels
- Craft for strength with powder coated aluminium chassis
- Constructed to be both light and strong with carbon fibers



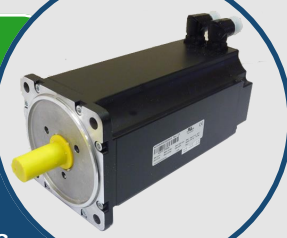
Productive and Profitable

- Cuts production losses
- Removes non-conforming weight products
- Helps detect errors elsewhere in the production



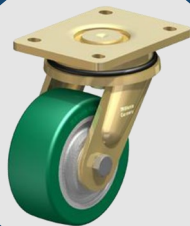
Powerful and Precise

- Requires minimal operator attention
- Prevents damage with power monitoring
- Comes with high-precision servo motors



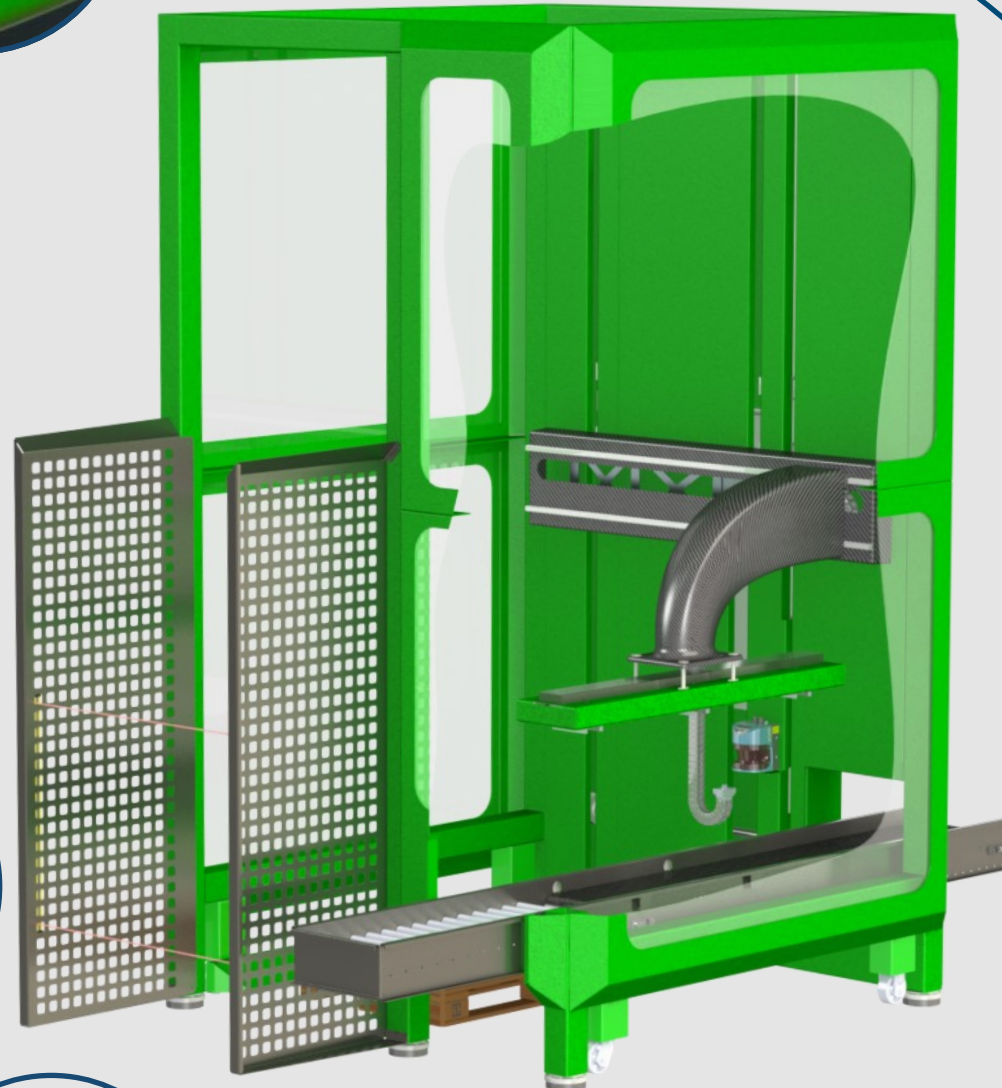
Mobile and Versatile

- Requires no recalibration after movement
- Ensure full utilization across the production line
- Switches from palletizing to depalletizing in a minut



Automatic and Accurate

- Calculate next motion accurately
- Detects case format automatically
- Scans for broken cases and crates



Engineered for Peformance

The PT5 paleTizer combines a palletizer and a depalletizer in one single and highly productive unit.

The combination of automatic height measurement and weight control means that you can depalletize or palletize different height of cases at the same pallet, no change of program when you change your cases.

The case control unit ensure that non-conforming cases or crates are removed and not palletized.

Not wellpacked cases and production losses are reduced while ensuring maximum customer satisfaction because your customers consistently receive well-stacked pallets.

With the PT5 paleTizer, manual labor costs are also reduced, and your production capacity is increased.

Equipped with castor wheels, the PT5 paleTizer is a mobile unit that can easily move to a different place in the production line. Recalibration is not needed when the unit is moved, which allows for a smooth chance from palletizing to depalletizing. Maximum utilization of the equipment and the profitability of your investment are ensured.

